



CAPABILITY STATEMENT

GWSOLUTIONS.COM

Global Wireless Solutions, Inc. (GWS) stands at the forefront of wireless network benchmarking, analysis, testing, and consumer research. Our expertise lies in conducting rigorous scientific evaluations of network performance across various environments, including indoors, outdoors, and in transit, assessing mobile network reliability where it matters most. We provide actionable insights by integrating controlled tests with extensive consumer research, aimed at improving not only connectivity for essential services and operations but the user's experience as well. With a global reach, we are dedicated to supporting the advancement of wireless technologies, making us an indispensable partner in understanding the needs of consumers.



COMPANY SNAPSHOT

CAGE: 3XBH0 **UEI:** GW3DNHJ1NAK1

Gov. Business POC: Charley Fjeldal

Phone: (703) 618-0416

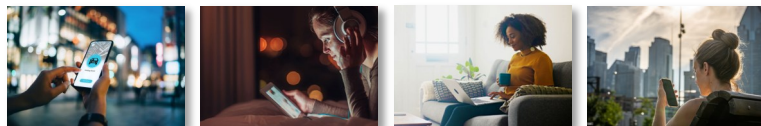
E-Mail: charleyf@gwsolutions.com

Address: 23475 Rock Haven Way Ste. 265, Dulles, VA 20166

Work Area: Worldwide

CORE COMPETENCIES

- **Network Testing:** Drive tests, Walk tests, Coverage, Mobility, Roaming, Spectrum Utilization, Throughput Speed Tests
- **Performance Analysis:** Call Quality, Data Throughput, Latency, Interference, Customer Experience
- **Advanced Technologies:** 5G, VoLTE, Combined Connectivity (Cellular/Broadband)
- **Benchmarking & Frequency Utilization:** Competitive Analysis, Estimated Site Locations, E911, Scanner Testing
- **Consumer Research:** Consumer Behavior, Mobile App Engagement, Consumer Sentiment, Survey Capabilities
- **Big Data:** Data Management & Analysis
- **Software Solutions:** In-House Development, App Development, Integration
- **Project Management:** Tenured Personnel, Efficient Oversight



DIFFERENTIATORS

- **28+ Years of Experience:** Demonstrates a long-standing commitment to excellence and a deep understanding of the industry
- **Innovative Technology:** Highlights our use of cutting-edge technology to provide advanced solutions
- **Comprehensive Solutions:** Emphasizes the ability to deliver all-encompassing services that meet a wide range of needs
- **Efficiency:** Showcases our focus on delivering services in the most time-effective manner
- **Streamlined:** Indicates the company's processes are optimized for simplicity and effectiveness, reducing complexity for clients
- **Versatility:** Illustrates the company's flexibility and ability to adapt services to meet diverse requirements
- **Transparency:** Reinforces our commitment to open and clear communication with clients, building trust
- **Approach:** Combine market-leading network benchmarking technology and methodology with deep behavioral data

PRIMARY NAICS & PSC CODES

518210 - Computing Infrastructure Providers, Data Processing, Web Hosting, & Related Services

519290 - Web Search Portals & All Other Information Services

541330 - Engineering Services

541618 - Other Management Consulting Services

541910 - Marketing Research & Public Opinion Polling

B506 - Special Studies/Analysis - Data (Other Than Scientific)

B553 - Special Studies/Analysis - Communications

R499 - Support- Professional: Other

R702 - Support- Management: Data Collection

PAST PERFORMANCE

Federal Communications Commission

2 Contracts Awarded: [GW3DNHJ1NAK1](#)

Location: Dulles, VA | **Dates:** 09/2023 | 08/2023

NAICS: 541330 | **PSC:** R425

US Air Force, Research Laboratory

Dates: 05/2020 - 06/2020 | **Details:** 5G spectrum utilization, coverage, and mobile network performance testing

AT&T Mobile

Years: 2001 - 2023 | **Details:** Nationwide Competitive Benchmarking (Drive and walk testing)